

Charlotte Douglas International Airport



Connecting the Carolinas to the World



Airport Mission

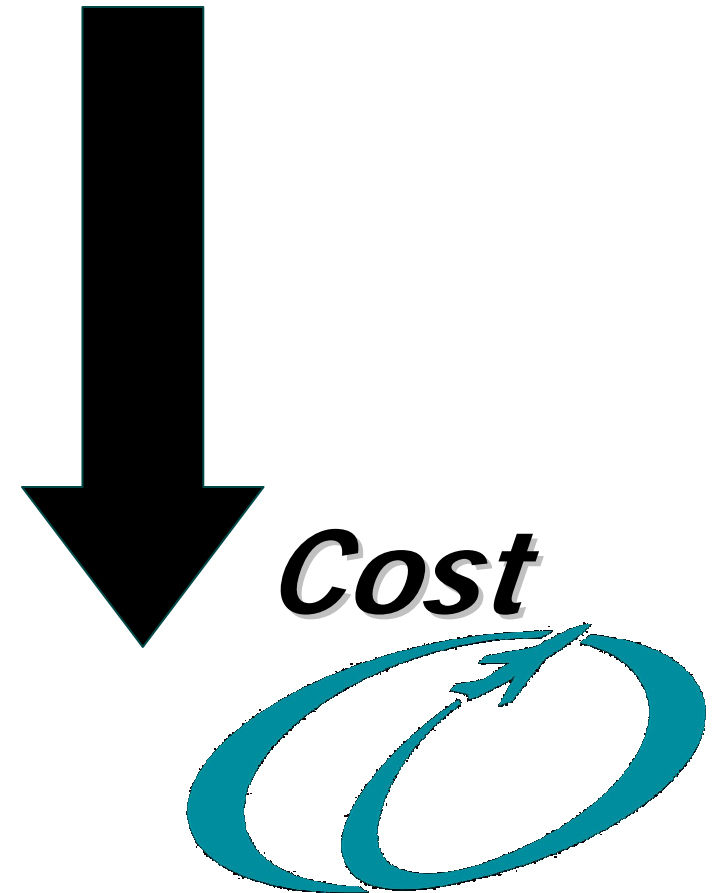
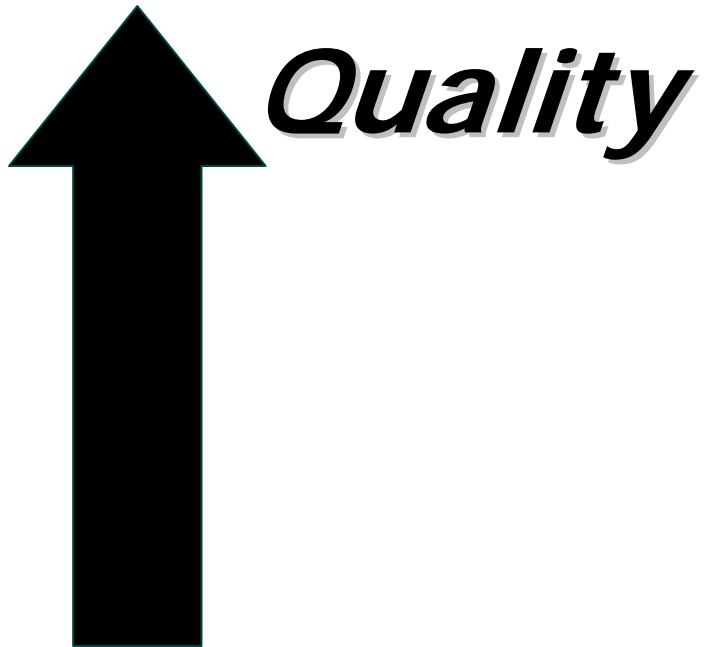


"Charlotte Douglas International will be the preferred airport and airline hub by providing the highest quality product for the lowest possible cost."

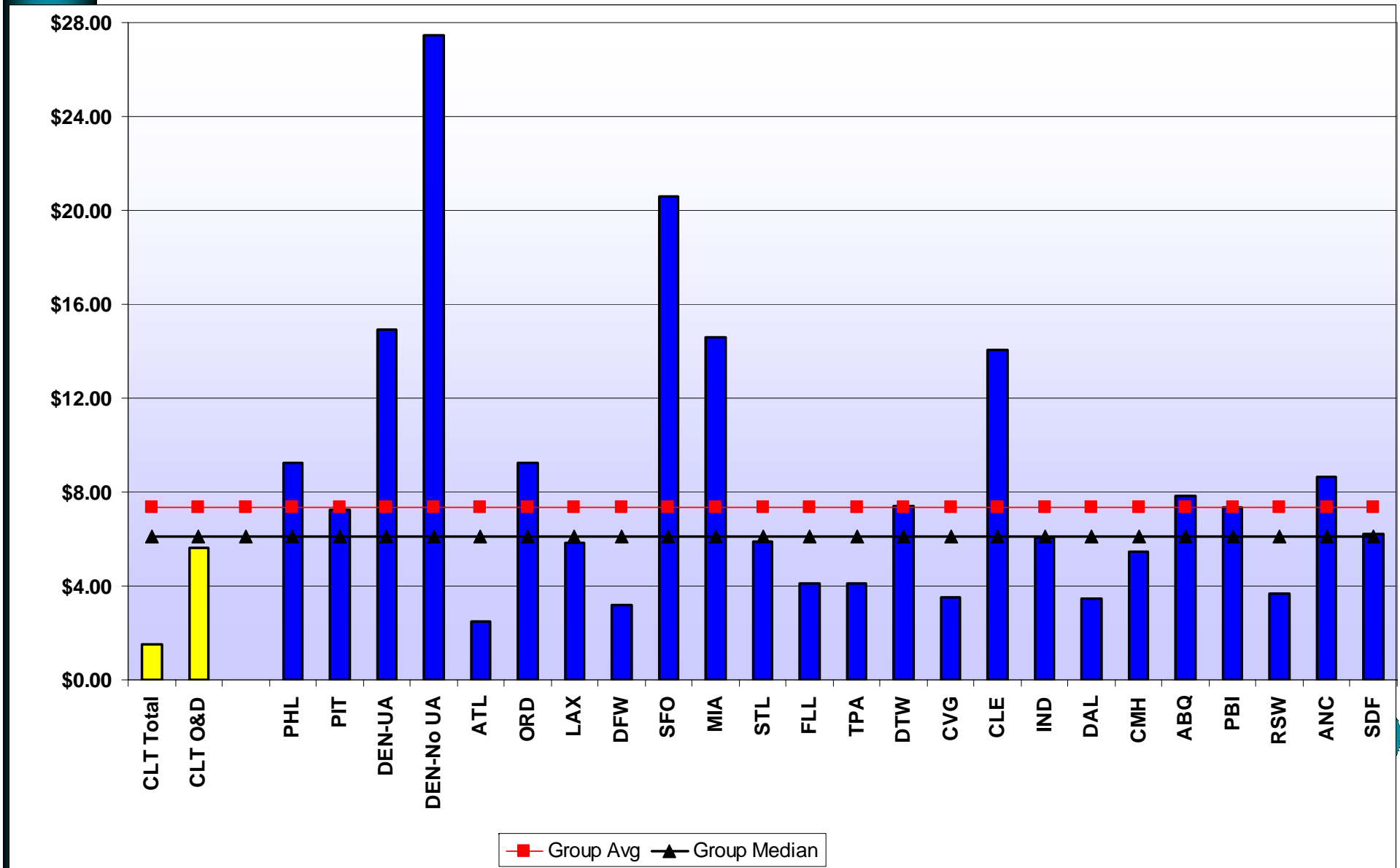


Airport Goal

- Provide the highest quality product for the lowest possible cost.



Airline Cost Per Enplaned Passenger at Large and Medium Hub Airports



CLT Airfares



- Charlotte Airfares fell nearly 5 percent between the second quarter of 2004 and the same period in 2005.
- Charlotte had the seventh-highest decline of the 85 largest markets surveyed by the Bureau of Transportation Statistics.
- Nationally, average fares increased nearly 2 percent in the same period.



The Economic Development Platform

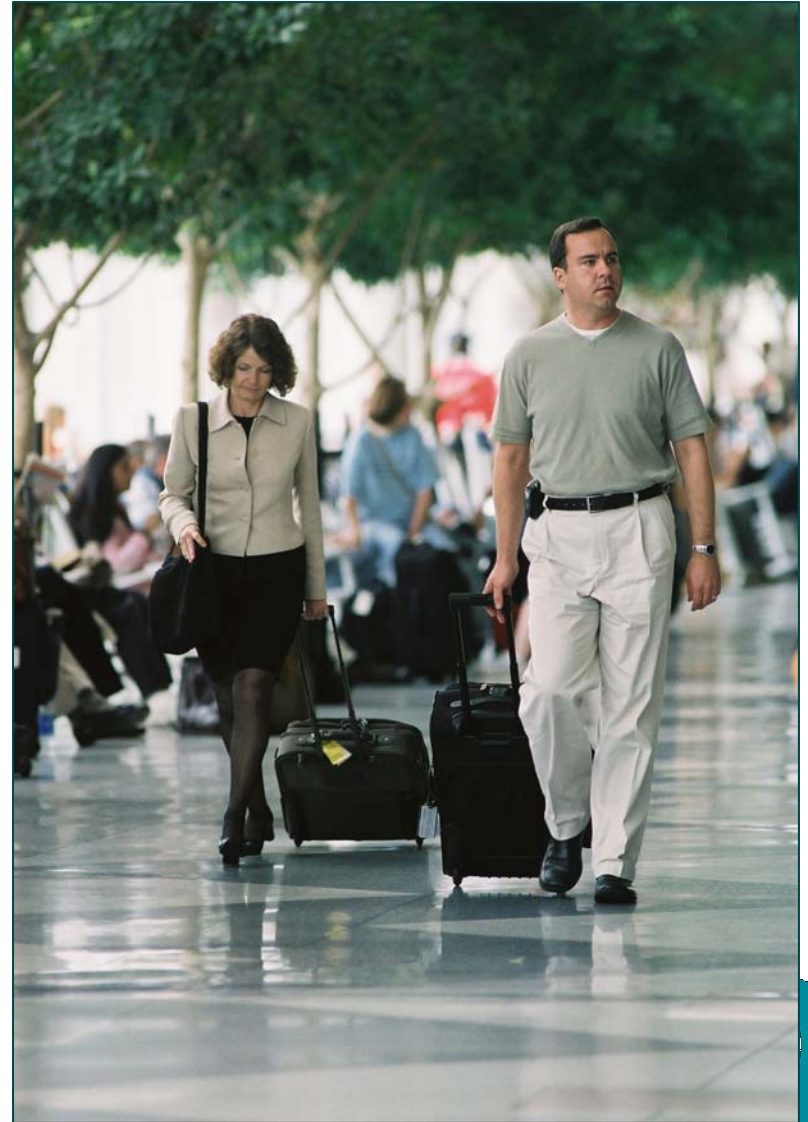


- **Generates nearly \$10 billion in annual economic impact**
- **100,000 jobs are directly or indirectly supported by the airport**



Airport Fast Facts...

- **594 Daily Departures**
(December 2005)
- **Non-stop service to 117 destinations**
- **Non-stop service to 24 int'l destinations**
- **Over 28,000,000 passengers in 2005**
- **18,693 Employees**



US Airways Largest Hub



- 19th Nationwide in passengers with the hub
- 49th Nationwide in passengers without the hub

US Airways New Livery

America West



Piedmont



The airline will honor its heritage by flying four aircraft dressed in vintage livery.

Pacific Southwest Airlines
(PSA)



Allegheny



US Airways New Livery

- US Airways unveiled its new livery during a press event at CLT on August 23 as part of a tour of its hub cities.
- All aircraft will feature a “heritage mark” with the logos of America West, Allegheny Airlines, Pacific Southwest Airlines (PSA) and Piedmont.



Volunteer Program

- Program kicked off on May 18th
- Currently have 50 volunteers
- Racing theme (Airport Pit Crew)
- Responsibilities include:
 - Wayfinding
 - Meet and Greet Passengers
 - Create First Impression of Airport and City
 - Providing Airport Information
 - Providing Tourist Information



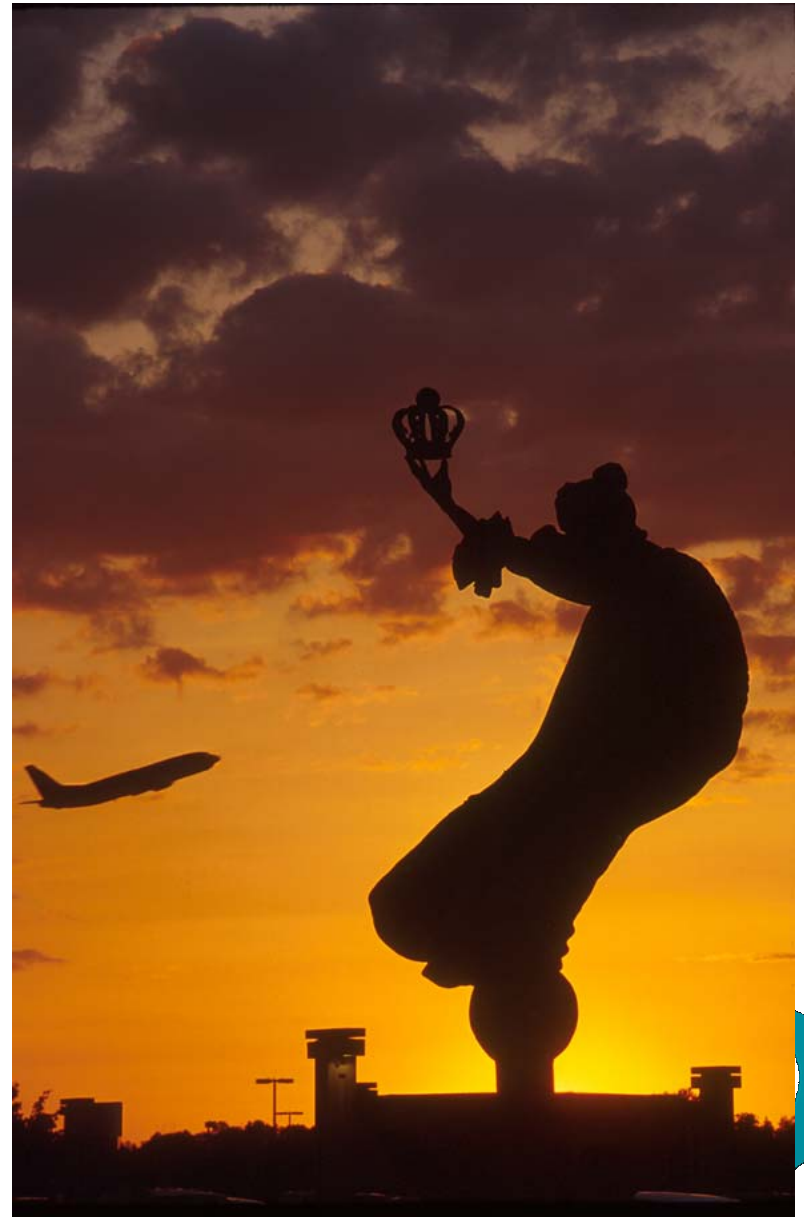
State of the airport...

➤ **Strengths:**

- Manage through crisis
- Low operating rates
- Cash

➤ **Reflected in Bond Issue and Ratings:**

- Closed on 9/15/04
- \$165 million
- Rated A- with stable outlook by Standard & Poors, A3 stable by Moody, and A by Fitch



Passenger Facility Charge (PFC)

PFC

- Collection began November 1, 2004
- \$3.00 per enplaned passenger



Airport Development...

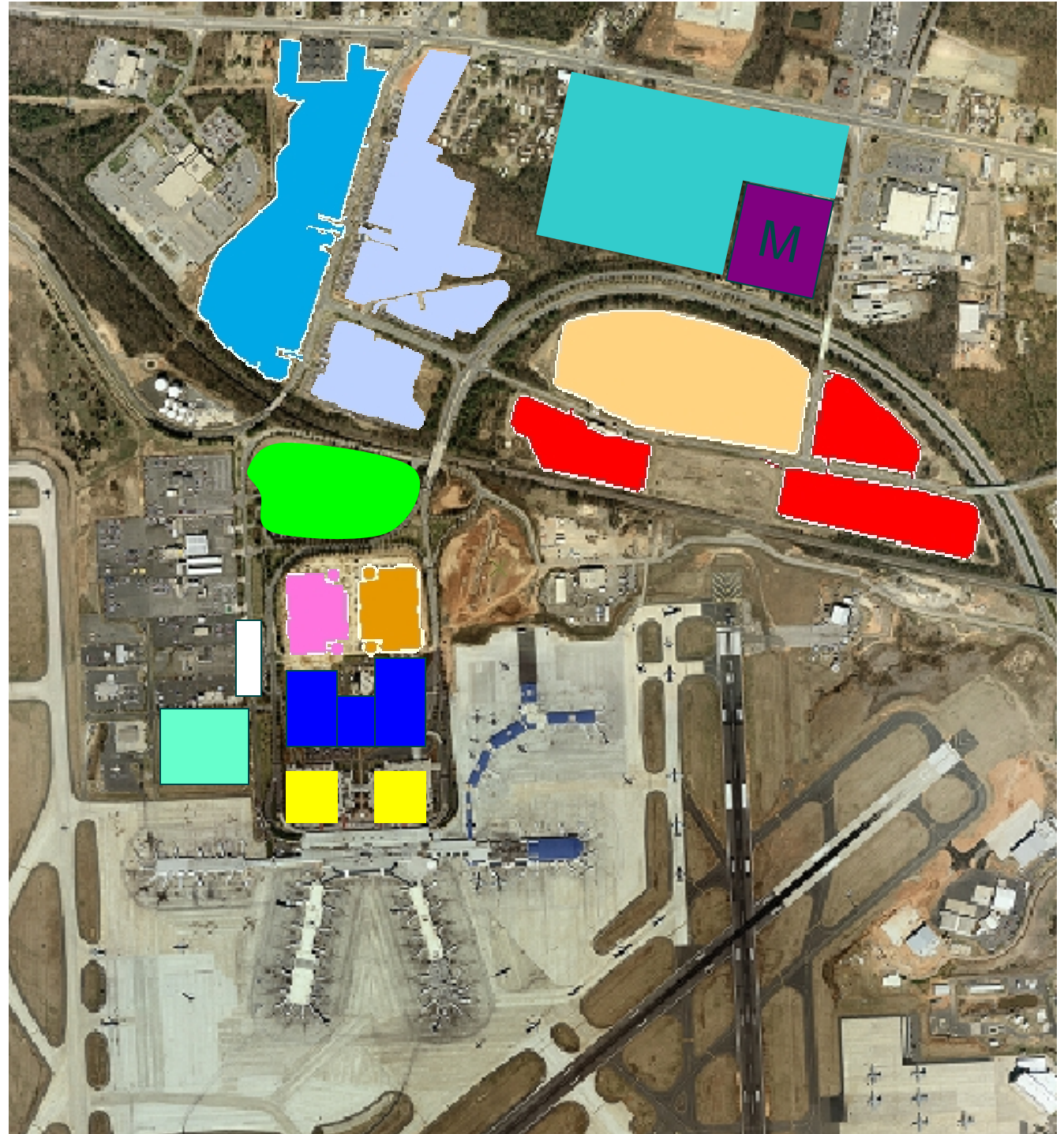


Parking Deck



Parking

- Hourly Decks
- Daily Surface Lot
- West Daily Deck
- East Daily Deck
- Remote
- Long Term I
- Long Term II
- Overflow
- Employee Parking
- Valet
- Cell Phone Lot
- Proposed Valet Deck



Airport Business Center

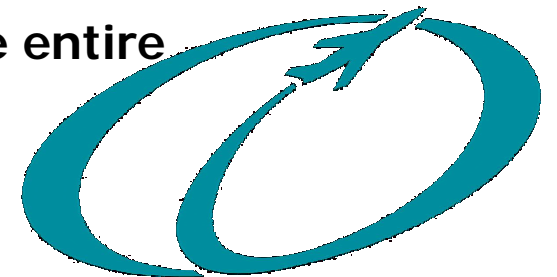
- Wireless Hotspot
- Conference Room
- Computer Stations
- Fax and Copy Machines



Wireless Service



- Wireless currently available in airport Business Center and open seating area adjacent to Business Center
- Airport is currently in the process of making the entire terminal wireless
- Service will be free to customers

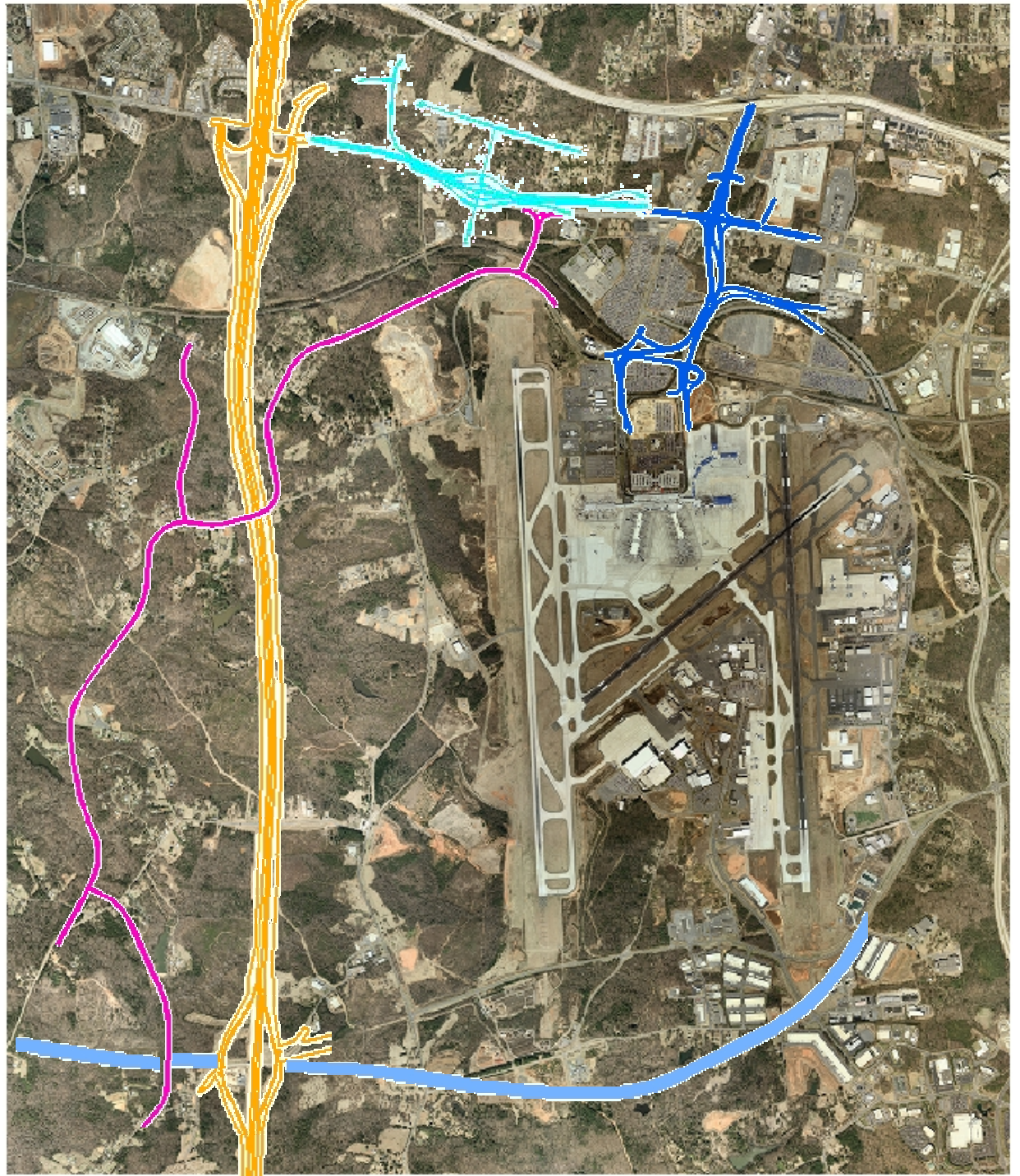


New Concessions



Road Projects

- Old Dowd
- Wallace Neel
- West Blvd.
- Airport Entrance Road
- Wilkinson Blvd.





New Runway

- **9,000 ft. in length**
- **4,300 ft. west of Runway 18R-36L**



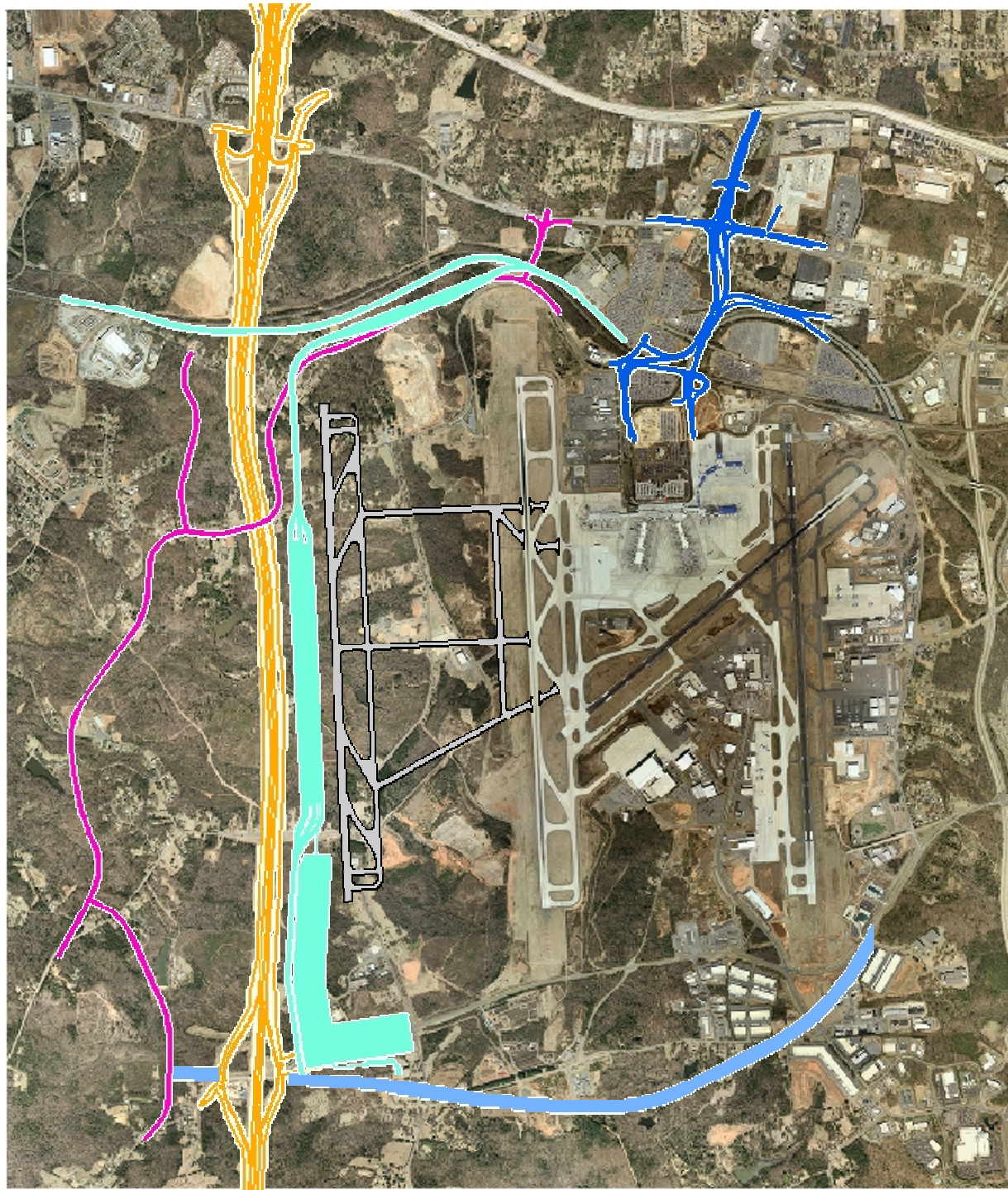
Current Intermodal Facility



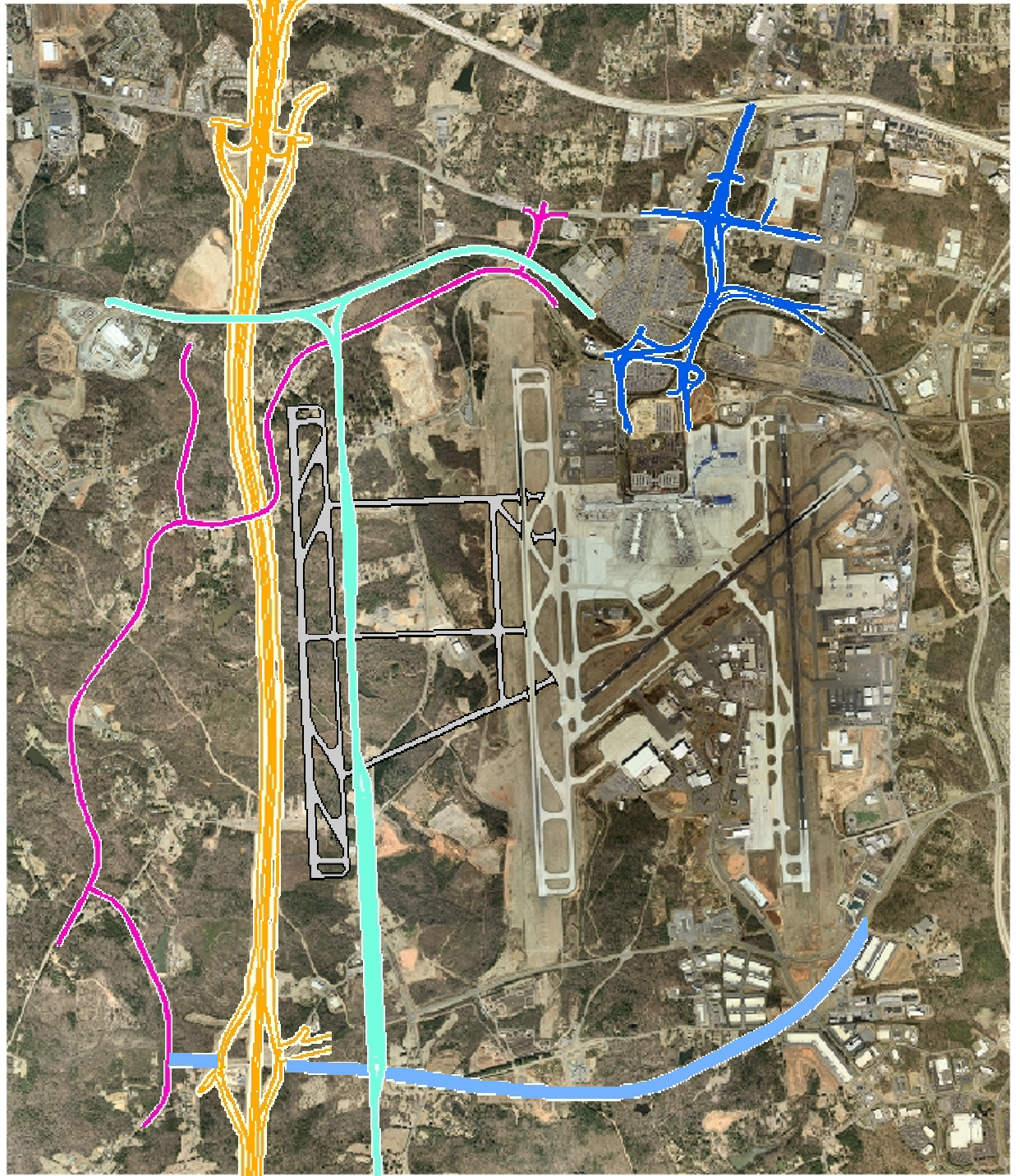
- This facility is nearing capacity
- No room for expansion



***Proposed
Intermodal
Facility***
(original plan)

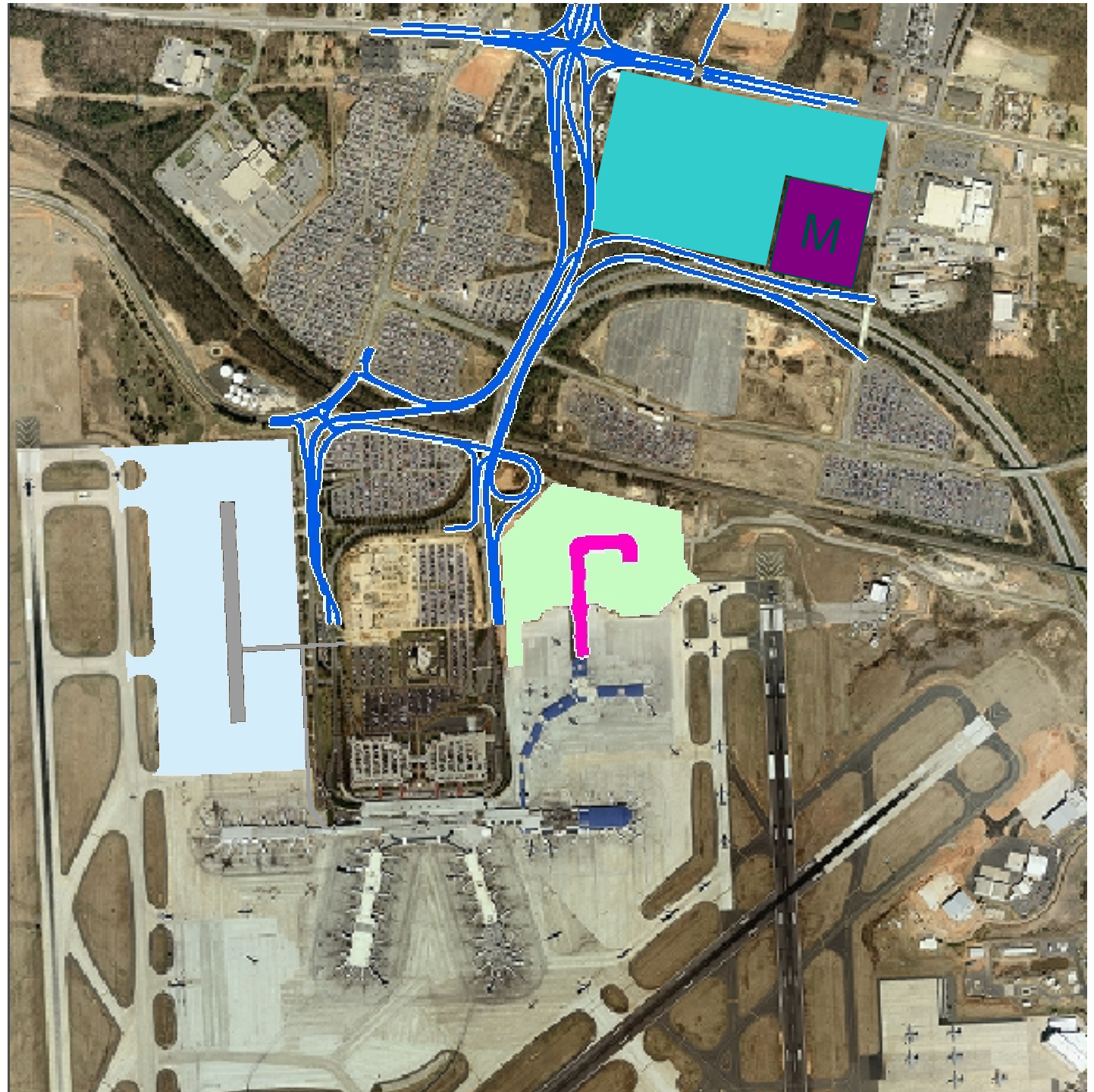


***Proposed
Intermodal
Facility***
(updated plan)



Future Projects

- Relocate Rental Car Facilities
- Int'l Terminal
- Ramp E
- Concourse E



Concourse E Expansion



- Currently has 26 gates
- Expanding to 50 gates

Concourse E Ramp



- Currently parking 37 aircraft at 26 gates

Cargo Facilities



- 50+ Acres of Ramp Space
- 570,000 Square Feet of Building Space
- 154,000 Tons of Cargo moved through CLT per year



General Aviation



General Aviation

- Fixed Base Operator (FBO): Wilson Air Center
- Began service February 1, 2005
- Decreased fuel prices, a 30%-41% cost savings to CLT-based corporations for jet fuel





Federal Security...



Federalization of Airport Security



- TSA federalized checkpoint employees on September 4, 2002



Airport Security Screening

Of the largest U.S. airports with security wait times exceeding 10 minutes, these are the best and worst:

<u>WORST</u>	<u>BEST</u>
Piedmont-Triad, N.C.	Kahului, Hawaii
Philadelphia	Dallas Love
Cleveland	Jacksonville
Long Beach, Calif.	Kansas City, Mo.
West Palm Beach, Fla.	Charlotte
Raleigh-Durham, N.C.	Tucson
Miami	Milwaukee
Fort Myers, Fla.	El Paso
Baltimore	Houston Hobby
Phoenix	Richmond, Va.
Fort Lauderdale	San Francisco

Source: Transportation Security Administration data from June 1, 2004, through May 16, 2005; USA TODAY analysis by Paul Overberg





*Where do we go
from here...*



Focus on Our True Mission...

- **Focusing on good customer service**
- **Running a cost efficient and effective operation**



Charlotte Douglas International Airport



Connecting the Carolinas to the World

